

Specifications

DESCRIPTION	VALUE	STANDARD
Total Thickness	0.24" (6 mm)	—
Wearlayer Thickness	0.08" (2 mm)	—
Weight	1.89 lbs/ft ²	—
Size (Interlocking)	25" x 25" (635 mm)	—
Size (Square)	24" x 24" (610 mm)	—

CLASSIFICATION

Electrical Resistance	$2.5 \times 10^4 < Rt < 10^7 \Omega$	ANSI/ESD STM 7.1
Static Electrical Propensity	< 100 v	ANSI/ESD 97.2
Protection Against Electrostatic Discharges	Fully Compliant	ANSI/ESD S20.20
Coefficient of Friction	0.80 (Dry) / 0.82 (Wet)	ASTM D2047

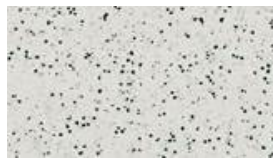
DURABILITY

Static Load (250psi)	0.001"	ASTM F970
Rolling Load (500 cycles @ 100 lbs)	0.000" (no change)	ASTM F2753
Indentation Hardness (Type A Shore Durometer)	95	ASTM D2240
Dimensional Stability	≤ 0.25%	ASTM D1204

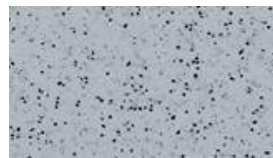
ENVIRONMENT/INDOOR AIR QUALITY

TVOC After 28 Days	< 10 µg/m ³	ISO 16000-6
--------------------	------------------------	-------------

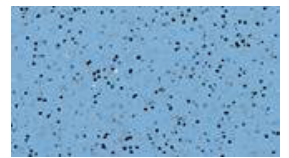
Available Colors



Light Gray



Dark Gray



Blue
(special order)

StaticWorx®

P.O. Box 1556, Williston,
VT 05495

staticworx.com

617-923-2000
f: 617-467-5871
info@staticworx.com