

SHADOWFX™ SDC

FIELDS & STONE

ANSI, FAA and IEC compliant

SHADOWFX SDC — CONSTRUCTED OF PREMIUM BRANDED YARN FOR DEMANDING ESD APPLICATIONS AND 24/7 ENVIRONMENTS.



Stones: Serpentine



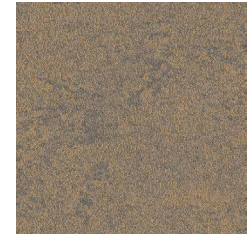
Stones: Anthracite



Stones: Sandstone



Stones: Granite



Stones: Quartz



Stones: Tourmaline



Stones: Mica



Stones: Shale



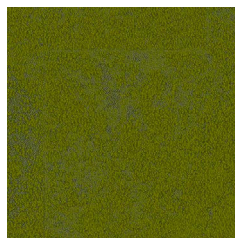
Fields: Coastal Plain



Fields: Pasture



Fields: Savanna



Fields: Meadow



Fields & Stone: Savanna and Serpentine



Fields & Stone: Coastal Plain and Anthracite



Fields & Stone: Sandstone and Meadow



Fields & Stone: Coastal Plain and Granite



Fields & Stone: Quartz and Meadow



Fields & Stone: Tourmaline and Pasture



Fields & Stone: Savanna and Mica



Fields & Stone: Pasture and Shale

ShadowFX ESD carpet tile is made by an industry leader in the development of flooring made using recycled materials and 100% Carbon Neutral for the total life cycle.



SHADOWFX™ SDC FIELDS & STONE

Benefits

Meets GroundSafe criteria for use around operational electronics, computers and telecommunications equipment.

- Lifetime static control
- Multiple height tip shear loops eliminate unsightly seams
- Ideal for installation over bare concrete and access floors
- 71% recycled content (fields, stone) (57% post-industrial, 14% post-consumer)
- 77% recycled content (fields and stone accents) (66% post-industrial, 11% post-consumer)
- Certified Carbon Neutral Floors™
- Green Label Plus – Certified



Meets the following standards:

- Motorola R56 : For use in 9-1-1 dispatch facilities
- FAA STD 019f: For flight control applications
- NFPA 99: For use in healthcare facilities
- ASTI-0600321.2015: For telecommunications rooms
- ANSI/ESD S20.20-2014: For electronics handling

ShadowFX Floating Floors

INSTALL OVER ANY EXISTING HARD SURFACE – AN IDEAL OPTION FOR OCCUPIED WORKSPACES

Create a floating floor by positioning Shadow FX carpet tiles over GroundBridge®, then join tile corners with TacTiles®.

- No VOCs — no need to shuffle employees to different work areas or endure downtime and disruptions.
- No need to remove furniture. Just lift desk and consoles and place tiles in designated spaces.
- No glue, no mess — easy, fast, clean installations & tile replacement.



Floating ShadowFX carpet tile installed over access flooring

SPECIFICATIONS

Construction: Tufted pattern loop

Yarn weight: 26 oz./sq. yd. (882 g/sm)

Fiber Modification Ratio: 1.9 to 2.2

Sizes: 19.69" x 19.69", available in 24" x 24", PosiTile-compatible with Tate Access Floors

Electrical resistance:

ESD S7.1/NFPA 99 Resistive Characterization of Materials:

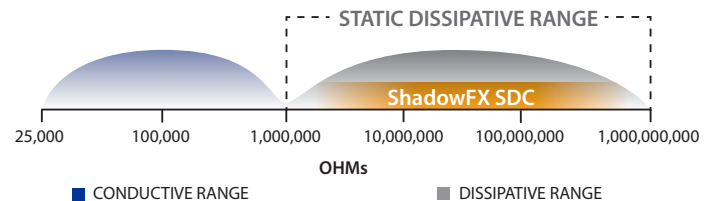
Nine or more readings between electrodes placed 1 foot apart. Tested with an applied voltage of 100V. Measured in Ohms, $1.0 \times 10^6 - 1.0 \times 10^9$. Meets Motorola R56 and ATIS-0600321 for use in telecommunications applications. Meets FAA STD 019f for use in flight control applications.

Approved for EPAs per ANSI/ESD S20.20

- System resistance per ANSI/ESD S97.1 $< 3.5 \times 10^7$
- Charge generation per ANSI/ESD S97.2 < 100 volts

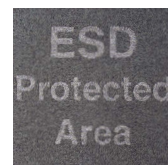
Roller Caster Electrical Test (CET) proven. Product meets ANSI/ESD S20.20 after 125,000 cycles.

Static Dissipative for ESD Safety



Non-Directional

Installation Method



ESD Messaging Tiles Available



Lifetime Conductivity Warranty



Roller Caster Electrical Test Proven

