

staticWorx[®]
GroundSafe[®] ESD Flooring



GroundLock[™] **Extreme**

Ideal for data centers, electronics manufacturing, clean rooms, and installation over raised access floor panels.

No other hard-surface ESD tiles work as well over the raised floors in data centers and server rooms. Straddled over panels—typical in field installations—all other ESD tiles are too thin to hide the seams. With GroundLock, the seams between tiles are nearly invisible.

Unlike most tile, our GroundLock ESD tiles are installed without adhesives and are dimensionally stable (without full adhesion).

The versatility, thickness and dimensions of our interlocking tiles make them a great option for use over raised access panels.

- GroundLock Extreme tiles come in interlocking tiles or as cut, flat-edge tiles for installation with releasable adhesive
- The thickness of GroundLock tiles inhibits telegraphing of seams
- GroundLock 2' x 2' tiles work beautifully with Staticworx ShadowFX™ 2' x 2' carpet tiles - with no need for transitions



*GroundLock Extreme installed at Advanced Motion Controls
Notice tight, invisible seams.*



GroundLock tile installation in progress, General Dynamics

Features

COST EFFECTIVE

- Can be installed on any sub-floor
- No special sub-floor prep required
- Easy to clean, maintain and repair

ERGONOMIC

- Slip resistant
- Allows for easy rolling of pallets and carts

DURABLE

- High degree of dimensional stability
- Withstands heavy loads up to 30,000 lbs.

HIGH PERFORMANCE STATIC CONTROL

- Tiles are electrically bonded to each other
- Meets ANSI/ESD S20.20-2014

GroundLock™ Extreme installs easily over any sub-floor or raised access floor—no disclaimers.

Completely reusable—saves time and money.

Designed for quick, hassle-free installation, this floor is easily disassembled and moved to a different space or location. GroundLock tiles can be installed by anyone—with or without experience. If the space is redeployed, it's no big deal!

Installable over any sub-floor, with no disruption and no permanent commitment—an ideal solution for leased spaces, concrete slabs with vapor issues, occupied spaces, and spaces requiring fast installation.

Meets ESD S20.20—and all high-performance static-control parameters of a floor installed with a full-spread, conductive adhesive. Perfect for labs, clean rooms, R&D, and electronics manufacturing and handling spaces.

The square version can be installed with releasable adhesive like any regular tile.

FLEXIBLE

- Available in both interlocking and seam-welded square formats
- Aluminum ramping edges and corner kits available

GREEN

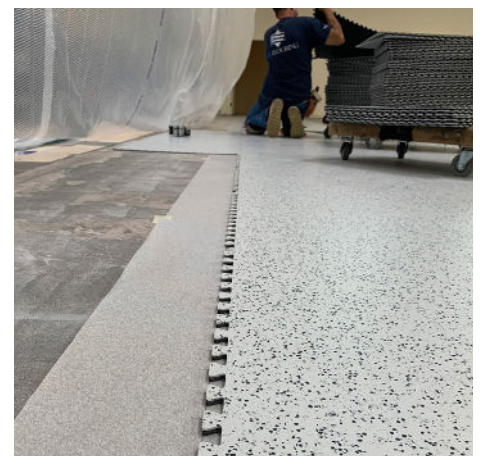
- 100% Recyclable
- Backing carbon-loaded recycled vinyl

GUARANTEED TO LAST

Lifetime Warranty



4000 ft² of tile installed in 1 day.



Specifications

DESCRIPTION	VALUE	STANDARD
Total Thickness	0.24" (6 mm)	—
Wearlayer Thickness	0.08" (2 mm)	—
Weight	1.89 lbs/ft ²	—
Size (Interlocking)	25" x 25" (635 mm)	—
Size (Square)	24" x 24" (610 mm)	—

CLASSIFICATION

Electrical Resistance	$2.5 \times 10^4 < Rt < 10^7 \Omega$	ANSI/ESD STM 7.1
Static Electrical Propensity	< 100 v	ANSI/ESD 97.2
Protection Against Electrostatic Discharges	Fully Compliant	ANSI/ESD S20.20
Coefficient of Friction	0.80 (Dry) / 0.82 (Wet)	ASTM D2047

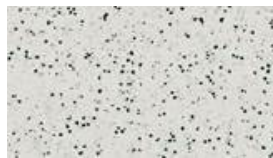
DURABILITY

Static Load (250psi)	0.001"	ASTM F970
Rolling Load (500 cycles @ 100 lbs)	0.000" (no change)	ASTM F2753
Indentation Hardness (Type A Shore Durometer)	95	ASTM D2240
Dimensional Stability	≤ 0.25%	ASTM D1204

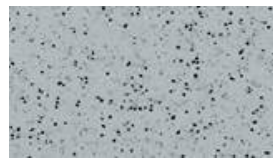
ENVIRONMENT/INDOOR AIR QUALITY

TVOC After 28 Days	< 10 µg/m ³	ISO 16000-6
--------------------	------------------------	-------------

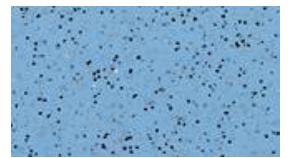
Available Colors



Light Gray



Medium Gray



Blue
(special order)

